



Our Core Offering: Complete Peace Of Mind!

How To Keep Your Machines Trouble-free



Without the Customer, We Would Not Exist!

That truism drives us every single day to deliver only the best to every single customer. Our emphasis on customer delight is manifested through timely delivery, flawless implementation, optimisation of production processes, training and more.

COMPLETE CUSTOMER LIFECYCLE SUPPORT

We don't just sell machines; we forge relationships. We don't want a mere transaction, rather our desire is to be part of your progress for life!

That's why we provide comprehensive lifecycle support. Backing up world-class machines with world-class spares and service. Here's how you can make the most of our commitment to you.

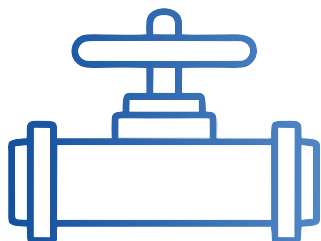


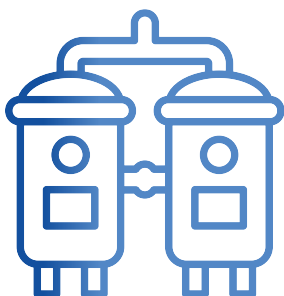
Services and Offerings

Spares

The best of machines will still experience downtime. But that downtime will be minimal if you keep the necessary spares handy. We can advise you on your spare inventory.

- Sensors & Transmitters
- AHU Inlet / Exhaust Filters
- Valves & Fittings
- Inflatable / Spongy Gaskets
- Bottom Sieves
- High Speed / High-performance Bottom Spray Nozzles
- 1 / 3 / 5 / 6 / 7 / 9 Heads Top Spray Nozzles
- Telescopic / Rodless Cylinders
- Finger Bags / Inverted Socks / Bonnets / Antistatic Filters
- Seal Kits
- Safety Instruments - Load Arrester / Explosion Flap & Many More





Accessories

We develop accessories to enhance efficiency and maximise machine capabilities for functionality, versatility and optimal performance of your machines.

- Product Containers
- Clean & Pure Steam Generator
- Wash in Place System - SKID / Standalone
- Solution Preparation & Storage Vessels
- Product Transfer Systems
- Air Balancing System
- Hydraulic Trolley for Air Channeliser / ADP Installation
- Weighing Balance System
- Wet & Dry Scrubber & Many More

Maintenance

For optimal performance and longevity of pharmaceutical process equipment, preventive and corrective maintenance strategies are critical. We offer the best trained and knowledgeable personnel to this effect – on-site and remote options.

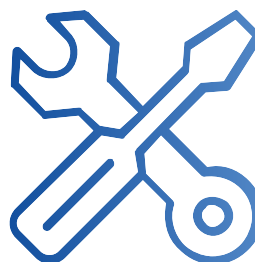
Preventive Maintenance:

- Regular Inspections
- Scheduled Services
- Cleaning and Sanitisation
- Performance Testing
- Proactive Component Replacement
- Documentation and Record-keeping

Corrective Maintenance:

- Prompt Issue Resolution
- Root Cause Analysis
- Emergency Repairs
- Spare Parts Management
- Staff Training and Preparedness

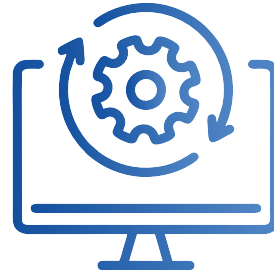
The most seamless and hassle-free way to keep your machines up and running is to opt for a service agreement or AMC with us. The biggest benefit of our dedicated support option is that you are assured 24x7 peace of mind.



Software Upgrades

Regular software upgrades that keep your equipment current from rapid obsolescence and hefty expenses. Enjoy 21 CFR Part 11 compliance, complete with audit trails, data traceability, alarm management, and detailed MIS reports.

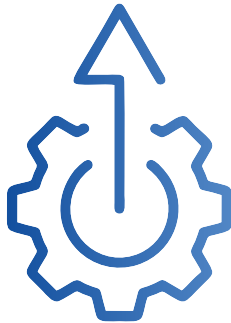
- Control System Upgradation
- PLC & SCADA Upgradation
- SCADA Version Upgradation
- Precise Parameter Control and Upgradation
- Equipment Integration



Upgrades / Retrofitting

Why invest huge sums of money on new machines when you can upgrade your existing equipment at a fraction of the cost! Upgrades also improve productivity and safety, reduce errors and mishaps, help streamline decision-making, and boost accountability.

- Process Improvement, e.g. Hot Melt System, Cool Zone
- Desiccant Type Dehumidification System Integration
- Spraying System Upgradation
- Air Handling Unit Upgradation
- Machine / Duct Cleaning System
- Retrofitting & Refurbishing of Equipment
- Instrumental / Equipment Upgradation & Many More



Process Expert Services

Trust us for superior process support. We offer expert guidance, training, and technical expertise to ensure your machine achieves peak performance.

- Operational Guidance
- Troubleshooting Assistance
- Process Optimisation
- Validation and Compliance Support
- Data Analysis and Reporting
- Training and Education
- Documentation Management
- Quality Control & Assurance
- Regulatory Compliance Monitoring
- Continuous Improvement Initiatives



Training

We shape your team into machine experts, arming them with the essential skills and know-how to operate, maintain, and troubleshoot effectively.

- Equipment Operation Trainings
- Maintenance and Cleaning Procedures
- Troubleshooting and Problem-solving Skills
- Safety Protocols and Best Practices
- Regulatory Compliance and Quality Assurance
- Data Analysis and Interpretation
- Equipment Validation Procedures
- Change Management and Adaptation Trainings
- Emergency Response Training



Extensive Expertise Across Brands

We specialise in pharmaceutical equipment services, offering top-quality spares and retrofitting solutions not limited to our brand. Our expertise ensures seamless integration across various equipment brands, providing peak efficiency for modern pharmaceutical facilities. Trust our dedicated team for sourcing quality parts and implementing advanced retrofitting solutions, tailored to your machinery's needs, regardless of make or model.

Significant Benefits of Quality Customer Support

- Equipment Reliability
- Compliance with Regulations
- Product Quality Assurance
- Minimised Downtime
- Long-term Cost Savings
- Enhanced Productivity
- Risk Mitigation
- Operator Training and Safety
- Documentation and Auditing
- Continuous Improvement

Why anish pharma's Support Services

- Expertise and Experience
- Regulatory Compliance
- Timely and Responsive Service
- Customised Solutions
- Comprehensive Documentation

The anish Promise

anish pharma is a globally renowned name for Pharma Process Solutions. From modest beginnings in 1990, the company has reinvented itself multiple times over the ensuing three decades, to transform into an end-to-end process solutions provider for OSD, Semi-solid and Liquid, catering to Pharma, Nutra, and Food industries.

Today, anish pharma's solutions find application across the continents in over 30 countries, including the USA, China, Australia and New Zealand. Honesty, integrity, customer delight and innovation remain the core of our ethos. A deep sense of pride goes into the making of every anish product. We measure our success by just one key yardstick: Always surpass customer expectations!



34+
Years



30+
Countries



1,450+
Installations



1,00,000+ Sq Ft
Mfg. Area



anish pharma equip pvt ltd

HEAD OFFICE:

G-68, M.I.D.C, Ambad, Nashik,
Maharashtra, India - 422010

W www.anishpharma.com

SALES OFFICE:

B-613, Lodha Supremus II, Wagle Estate,
Thane (W), Mumbai - 400604

E spares@anishpharma.com