

ALMP

Anish Liquid
Manufacturing Plant



Ideal for liquid oral formulations

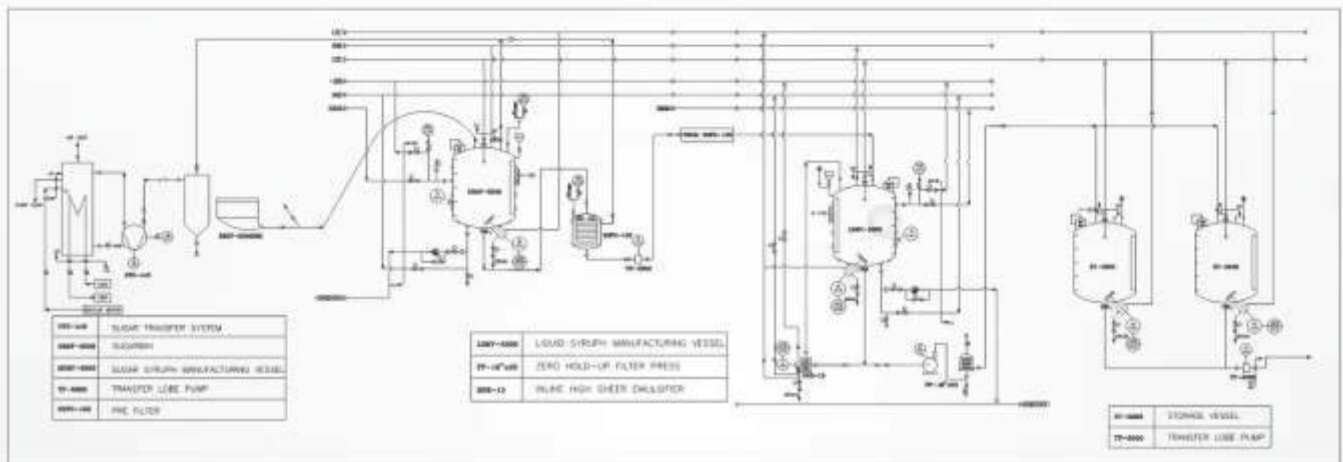
(Medicated syrup / flavoured syrup / water-based syrup)

Salient Features:

- cGMP Compliant safe cleaning & validation
- The vessels are provided with sanitary design flush bottom discharge valve.
- Monkey ladder is provided in the vessel for easy maintenance and cleaning purpose
- Jacket/limpet coil for heating & Cooling
- Advanced automation with regulatory compliance control-21 CFR part 11 compliance
- Digital indication & controls of all process parameters for process time, agitator speed, temperature, pressure & level
- SS 316/316L contact parts.
- Minimum manual handling of liquid.
- All material transfer is done under vacuum & transfer Pump
- All Vessels are cGMP & with Load Cells
- The gaskets are silicon food grade
- The entire plant is equipped with CIP
- Easy for loading & unloading
- Easy for cleaning
- Dry as well as water cooling mechanical seal
- Gear Box-Bonfiglioli / Greaves make

ALMP

Anish Liquid
Manufacturing Plant



Models:

	Commercial Model					
	ALMP 500	ALMP 1000	ALMP 2000	ALMP 3000	ALMP 4000	ALMP 5000
Capacity (in litre)	500	1000	2000	3000	4000	5000



anish pharma equip pvt. ltd.

Works: G-68, MIDC Ambad, Nasik,
Maharashtra, India 422010
Tel.: +91 253 2381831/2380337
Fax: +91 253 2380903

Office: B-613, Lodha Supremus Tower II,
Wagle Estate, Thane (W),
Maharashtra, India 400604
T.: +91 22 49765310/311

E: marketing@anishpharma.com | M: +91 9822268801 / 9881470643 / 8879988799
W: www.anishpharma.com